

CS-001

Custom mounts for Andor Spectrographs



Several clients requested custom mounts to attach the Glaz LineScan directly onto Andor Spectrographs. These included the Shamrock 163 and Kymera 193.

1. Challenge

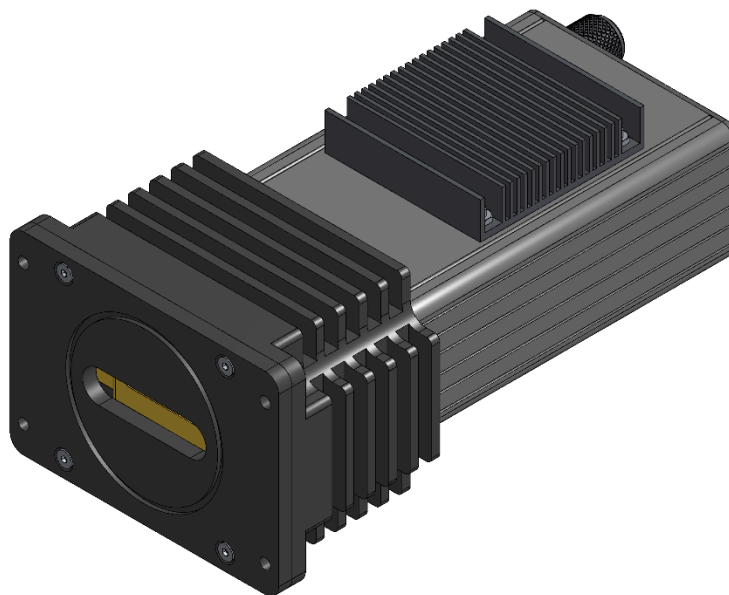
Andor spectrographs are designed to interface with Andor's range of cameras for spectroscopy. For example, iDus CCD/InGaA, Newton CCD and iStar CCD/sCMOS. These are high-end cameras and are expensive. Mounting other cameras onto Andor spectrographs can be challenging and require custom mounts. It is important to place camera sensors in the focal plane of the spectrograph optical output ports for good results.

2. Solution

With years of experience in CAD design and mount manufacturing, Synertronic Designs can provide turn-key mounting solutions for Andor spectrographs. We will make sure that the sensor is located in the focal plane and you can attach the camera to the spectrograph and ready to go.

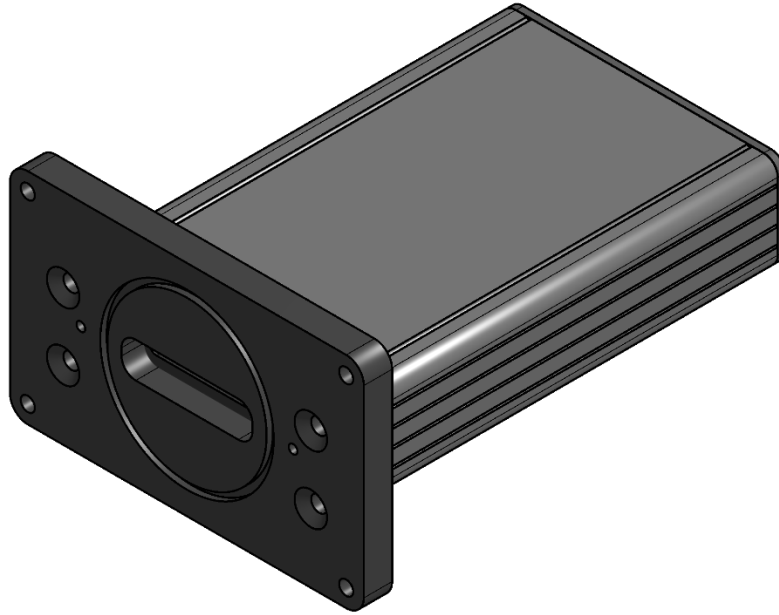
LineScan InGaAs

Synertronic Designs provided TE-cooled InGaAs cameras for several clients to be mounted onto Shamrock spectrographs. Below is an example of the Glaz LineScan-I-Gen2 with G11478-512WB sensor that can be mounted onto an Andor Shamrock 163 spectrograph:



LineScan CMOS

Our CMOS cameras can also be mounted onto Shamrock spectrographs. Below is an example of the Glaz LineScan-I-Gen2 with S12198-1024Q sensor that can be mounted onto an Andor Shamrock 163 spectrograph:



3. Impact

Cost-effective solution: With our in-house experience in CAD design and manufacturing network, we can provide custom mounting solutions at reduced cost.

Simplified integration: With custom mounts you can easily integrate our cameras with spectrographs.

Pump-probe measurement capabilities: By integrating our cameras with existing spectrographs, you can use the LineScan pump-probe measurement support.